



OXBOW NV-TI-1512/3024/ 3052 INVERTER



Mobile with wheels, stays powered anywhere



Pre-programmed plug and play system



Build in off grid solar inverter and lithium battery modules

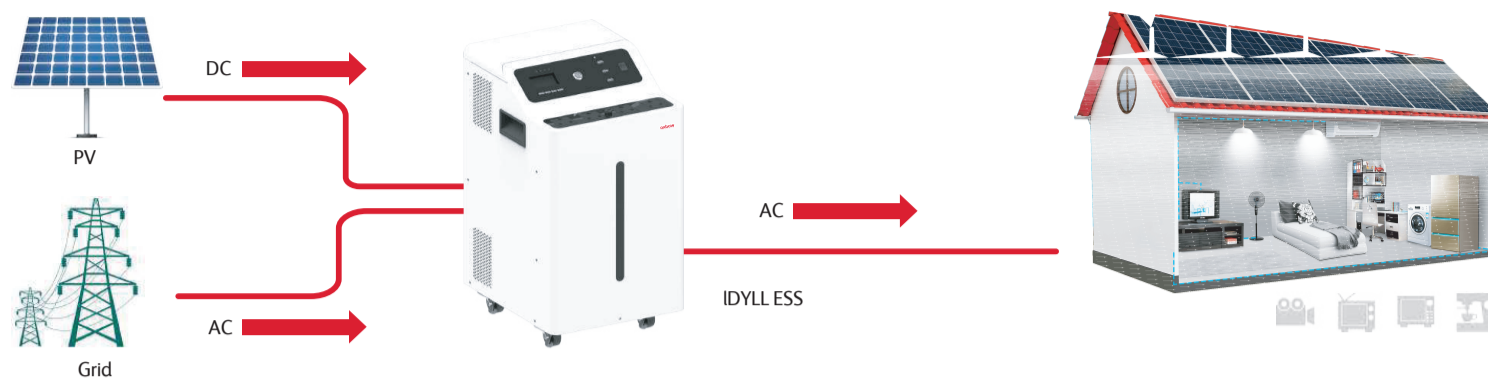


Powers homes or office appliances during all of load shedding

oxbow



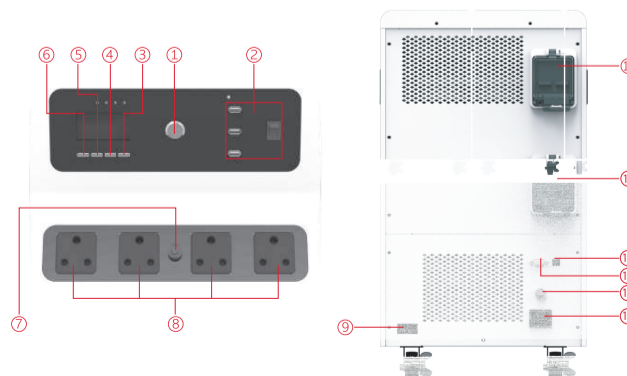
OXBOW NV-TI-1512/3024/3052 INVERTER



MODEL	NV-TI-1512	NV-TI-3024 / NV-TI-3052	
Rated Inverter Power	1500VA/1500W	3000VA/3000W	
INPUT			
Voltage		230Vac±5%	
Voltage Range		154~264Vac	
Frequency Range		40~70Hz	
AC Input Connection		IEC C20	
PV Input Connection		PP75	
OUTPUT			
AC Voltage Regulation (Batt. Mode)		230VAC ± 5%	
Surge Power	1500VA	3000VA	
Efficiency (Peak)	93.00%	93.50%	
Transfer Time		20 ms (Typical)	
Waveform		Pure Sine Wave	
Output Type		4*AC Outlets	
		2*USB PD ports(QC3.0)	3*USB PD ports(QC3.0)
SOLAR CHARGER & AC CHARGER			
Solar Charger type	PWM	MPPT	
Maximum PV Array Power	960W	1500W	
Maximum PV Array Open Circuit Voltage	30~85Vdc	30-115Vdc	
Maximum Solar Charge Current	40A	60A	
AC Charge Current	30A	40A	
Maximum Charge Current	50A	100A	
BATTERY			
Capacity	1280Wh (25.6V 50Ah)	2560Wh (25.6V 100Ah)	5120Wh (25.6V 200Ah)
Nominal Voltage		25.6Vdc	
Charging Voltage		27.6V	
Max Continuous Discharging Current	50A	100A	
COMMUNICATION			
Communication Ports		USB/RS232(Baud Rate2400)	
PROTECTION			
protection type		AC input /output breakers;battery switch;Earth Leakage Circuit Breaker	
ENVIRONMENT			
Humidity		20%~95%(No condensing)	
Storage temperature		-15~60℃	
Operation Temperature		0-40℃	

MOBILE ALL-IN-ONE ESS

- ①----Power ON/OFF ②----QC 3.0 ③----Enter ④----Down
- ⑤----UP ⑥----ESC ⑦----AC output circuit breaker ⑧----AC output
- ⑨----PV Input ⑩----Battery switch ⑪----Earth leakage circuit breaker
- ⑫----USB communication ⑬----RS232 ⑭----AC input circuit breaker ⑮----AC Input



CONTACT OXBOW:



08610 OXBOW



SALES@OXBOWSA.CO.ZA

oxbow